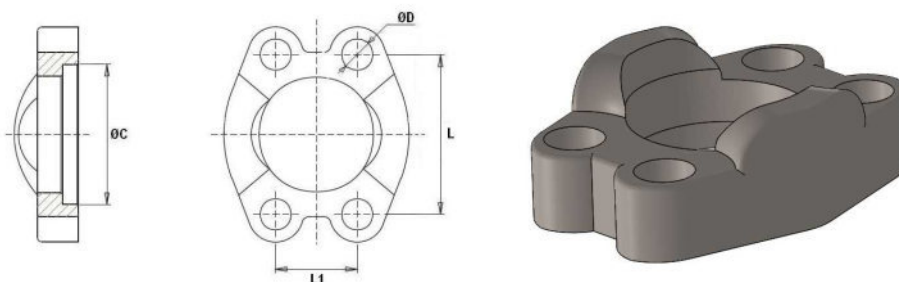


Conexiones Standard

Bridas para flexibles

Brida entera pasante

Acero Inoxidable AISI 316-L



Artículo	Serie	Ø int	Tamaño	L	L1	ØC	ØD
ZBBE308302	3000 PSI	30.2	1/2"	38,1	17,48	30,96	8,75
ZBBE312381	3000 PSI	38.1	3/4"	47,63	22,23	38,89	10,75
ZBBE316445	3000 PSI	44.5	1"	52,37	26,19	45,24	10,75
ZBBE320508	3000 PSI	50.8	1"1/4	58,72	30,18	51,59	11
ZBBE324603	3000 PSI	60.3	1"1/2	69,85	35,71	61,09	13,5
ZBBE332714	3000 PSI	71.4	2"	77,77	42,88	72,24	13,5
ZBBE340841	3000 PSI	41	2" 1/2	88,9	50,8	84,95	13,3
ZBBE3481024	3000 PSI	102.4	3"	106,38	61,92	102,4	17
ZBBE364127	3000 PSI	127	4"	130,18	77,76	127,8	17
ZBBE608318	6000 PSI	31.8	1/2"	40,49	18,24	32,54	8,75
ZBBE612413	6000 PSI	41.3	3/4"	50,8	23,8	42,06	11
ZBBE616476	6000 PSI	47.6	1"	57,15	27,76	48,41	13
ZBBE620540	6000 PSI	54	1"1/4	66,68	31,75	54,76	15
ZBBE624635	6000 PSI	63.5	1"1/2	79,38	36,5	64,29	17
ZBBE632794	6000 PSI	79.4	2"	96,82	44,45	80,16	21